

Potent Activation of Large-Conductance Ca^{2+} -Activated K^{+} Channels by the Diphenylurea 1,3-Bis-[2-hydroxy-5-(trifluoromethyl)phenyl]urea (NS1643) in Pituitary Tumor (GH₃) Cells[§]

Sheng-Nan Wu, Hsung Peng, Bing-Shuo Chen, Ya-Jean Wang, Pei-Yu Wu, and Ming-Wei Lin

Department of Physiology, National Cheng Kung University Medical College, Tainan, Taiwan (S.W., H.P.); Institute of Basic Medical Sciences, National Cheng Kung University Medical College, Tainan, Taiwan (S.W., B.C., M.L.); Department of Anesthesiology, Buddhist Dalin Tzu Chi General Hospital, Chiayi County, Taiwan (B.C.); National Health Research Institutes, Miaoli County, Taiwan (Y.W.); and Department of Medical Technology, Kaohsiung Medical University, Kaohsiung City, Taiwan (P.W.)

Received May 23, 2008; accepted September 22, 2008

ABSTRACT

1,3-Bis-[2-hydroxy-5-(trifluoromethyl)phenyl]urea (NS1643) is reported to be an activator of human *ether-à-go-go*-related gene current. However, it remains unknown whether it has any effects on other types of ion channels. The effects of NS1643 on ion currents and membrane potential were investigated in this study. NS1643 stimulated Ca^{2+} -activated K^{+} current [$I_{\text{K}(\text{Ca})}$] in a concentration-dependent manner with an EC_{50} value of 1.8 μM in pituitary tumor (GH₃) cells. In inside-out recordings, this compound applied to the intracellular side of the detached channels stimulated large-conductance Ca^{2+} -activated K^{+} (BK_{Ca}) channels with no change in single-channel conductance. It shifted the activation curve of BK_{Ca} channels to less depolarized voltages without altering the gating charge of the channels. NS1643-stimulated channel activity depended on intracellular Ca^{2+} , and mean closed time during exposure to

NS1643 was reduced. NS1643 (3 μM) had little or no effect on peak amplitude of *ether-à-go-go*-related gene-mediated K^{+} current evoked by membrane hyperpolarization, although it increased the amplitude of late-sustained components of K^{+} inward current, which was suppressed by paxilline but not by azimilide. NS1643 (3 μM) had no effect on L-type Ca^{2+} current. This compound reduced repetitive firing of action potentials, and further application of paxilline attenuated its decrease in firing rate. In addition, NS1643 enhanced BK_{Ca} -channel activity in human embryonic kidney 293T cells expressing $\alpha\text{-hSlo}$. In summary, we clearly show that NS1643 interacts directly with the BK_{Ca} channel to increase the amplitude of $I_{\text{K}(\text{Ca})}$ in pituitary tumor (GH₃) cells. The α -subunit of the channel may be a target for the action of this small compound.

NS1643 (Fig. 1) is a novel small-molecule compound that was reported to activate HERG K^{+} channels expressed in *Xenopus laevis* oocytes and in mammalian HEK293 cells (Casis et al., 2006; Diness et al., 2006; Hansen et al., 2006; Lu et al., 2008). This compound has also been shown to affect

spontaneous rhythmic activity in the epididymal duct via the activation of *erg* current (Mewe et al., 2008). Earlier studies have demonstrated that NS1608, NS1619, and NS11021 (Fig. 1), which are chemical structurally related compounds of NS1643, can modulate the activity of BK_{Ca} channels (Holland et al., 1996; Strøbaek et al., 1996; Bentzen et al., 2007). Whether NS1643 can affect other types of ion channels has not been clearly investigated, although its activation of hKCNQ1 channels was shown (Diness et al., 2006).

The BK_{Ca} channel, which is the product of a nearly ubiquitous, alternatively spliced gene (*KCa1.1*, *Slo1*, or *KC-NMA1*), represents a functional subtype of K^{+} channels, which play important roles in the regulation of neuronal excitability and hormonal secretion (Ghatta et al., 2006).

The work in this laboratory was partly supported by grants from the National Science Council (NSC-95-2745-B-006-002-MY2) and the Program for Promoting Academic Excellence and Developing World Class Research Centers, Ministry of Education, Taiwan. H.P., M.L. and Y.W. were partially supported by Graduate Scholarships from National Cheng Kung University Medical College.

Article, publication date, and citation information can be found at <http://molpharm.aspetjournals.org>.

doi:10.1124/mol.108.049106.

[§] The online version of this article (available at <http://molpharm.aspetjournals.org>) contains supplemental material.

ABBREVIATIONS: AP, action potential; BK_{Ca} , large-conductance Ca^{2+} -activated K^{+} ; *erg*, *ether-à-go-go* related gene; HEK, human embryonic kidney; HERG, human *ether-à-go-go*-related gene; *hSlo*, human slowpoke; $I_{\text{K}(\text{Ca})}$, Ca^{2+} -activated K^{+} current; $I_{\text{K}(\text{erg})}$, *ether-à-go-go* related gene-mediated K^{+} current; NS1608, *N*-(3-(trifluoromethyl)phenyl)-*N'*-(2-hydroxy-5-chlorophenyl)urea; PEI, polyethylenimine.

This channel is believed to share many of the common structural features of homotetrameric voltage-gated K⁺ channels, including an ion-selective pore formed by transmembrane segments S5 and S6 and a voltage-sensing module formed by transmembrane segments S1 to S4. The channel is unique in that it can be dually activated by membrane depolarization and elevations in intracellular Ca²⁺ concentrations. Organic compounds with varying structures capable of activating BK_{Ca} channels have been reported previously (Calderone, 2002; Wu et al., 2006; Nardi and Olesen, 2008). Because of their unique high conductance (~200 pS), even at low probability of opening, sufficient current could flow, thereby altering the membrane potential of excitable cells. On the other hand, the modulators of BK_{Ca} channels represent a potentially therapeutic approach to a wide variety of diseases (Nardi and Olesen, 2008).

In this study, we found that NS1643 can be effective in activating BK_{Ca} channels in pituitary tumor (GH₃) cells and in HEK293T cells expressing α -hSlo. The presence of this compound caused a shift in the voltage-dependence of BK_{Ca} channels to less depolarized voltages accompanied by a decrease in the mean closed time of the channel. Our results clearly show that in addition to stimulation of the HERG channel, NS1643 is a potent BK_{Ca} channel activator.

Materials and Methods

Cell Culture. GH₃, a clonal cell line derived from a rat prolactin-secreting pituitary tumor, was obtained from the Bioresources Collection and Research Center (Hsinchu, Taiwan), and the detailed methodology has been described previously (Wu et al., 2000). In brief, cells were cultured in Ham's F-12 medium (Invitrogen, Carlsbad, CA) supplemented with 15% (v/v) heat-inactivated horse serum, 2.5% (v/v) fetal calf serum, and 2 mM L-glutamine (Invitrogen) in a humidified environment of 5% CO₂/95% air. The culture medium was changed every 2 to 3 days, and cells were

passed when they reached confluence. Cell viability was often evaluated using WST-1 assay (Roche Diagnostics, Taipei, Taiwan). To promote cell differentiation, GH₃ cells were transferred to a serum-free, Ca²⁺-free medium. Under these conditions, cells remained 80 to 90% viable for at least 2 weeks. The experiments were performed 5 or 6 days after cells had been cultured (60–80% confluence).

Human embryonic kidney (HEK) 293T cells were obtained from the American Type Culture Collection (Manassas, VA). They were maintained in Dulbecco's modified Eagle's medium supplemented with 10% heat-inactivated fetal bovine serum, 2 mM L-glutamine, 100 U/ml penicillin, and 100 μ g/ml streptomycin at 37°C in a 5% CO₂ atmosphere. For transfection of HEK293T cells, cells numbering 2 to 6 $\times 10^4$ were seeded on the 24-well culture plate for 24 h before transfection. All culture media and supplements were obtained from Invitrogen (Carlsbad, CA).

Transfection. The expression vector pCMV6-XL4 containing a human voltage-dependent and Ca²⁺-activated K⁺ channel pore-forming α -subunit (α -hSlo; NM_002247.1) was purchased from Origene Technologies (Rockville, MD). The α -hSlo gene is known to encode a functional BK_{Ca} channel. The expression plasmid was subsequently transfected into HEK293T cells for transient expression. In brief, the plasmid was prepared in 150 mM NaCl as a diluent solution. PEI (ExGen 500; MBI Fermentas, Hanover, MD) and plasmid were mixed together and incubated for 10 min at room temperature to allow for adequate binding of the plasmid to the PEI. Plasmid-PEI mixture solution was added to the 24-well plate and centrifuged at 280g for 5 min. After centrifugation, transfected cells were incubated at 37°C for an additional 48 h. The functional expression of α -hSlo channels was determined by electrophysiological experiments.

Electrophysiological Measurements. Before the experiments, GH₃ or HEK293T cells were dissociated with 1% trypsin/EDTA solution, and an aliquot of cell suspension was transferred to a recording chamber affixed to the stage of a DM-IL inverted microscope (Leica Microsystems, Wetzlar, Germany). Cells were bathed at room temperature (20–25°C) in normal Tyrode's solution containing 1.8 mM CaCl₂. Patch pipettes were made from Kmax-51 capillaries (Kimble Glass, Vineland, NJ) using a PP-830 puller (Narishige, Tokyo, Japan), and their tips were fire-polished with an MF-83 microforge (Narishige). When filled with pipette solution, their resistance ranged between 3 and 5 M Ω . Patch-clamp recordings were obtained in cell-attached, inside-out, or whole-cell configurations using an RK-400 (Bio-Logic, Claix, France) or Axopatch-200B (Molecular Devices, Sunnyvale, CA) amplifier.

Data Recordings and Analyses. The signals consisting of voltage and current tracings were simultaneously displayed with a digital oscilloscope (Gould, Chandler, AZ) and a liquid crystal display projector (ViewSonic, Walnut, CA). The data were stored online in a Slimnote Vx3 computer (Lemel, Taipei, Taiwan) via a universal serial bus port through a Digidata 1322A interface (Molecular Devices), which was controlled by pCLAMP 9.0 (Molecular Devices). Currents were low-pass-filtered at 3 kHz. All single-channel recordings were digitized at 10 kHz. Ion currents recorded during whole-cell or single-channel experiments were stored and analyzed using pCLAMP 9.0 (Molecular Devices), Origin 7.5 (OriginLab Corp, Northampton, MA), or custom-made macros built in Excel 2007 spreadsheet running on Windows Vista (Microsoft, Redmond, WA). The pCLAMP-generated voltage-step protocols were used to investigate I-V relationships for ion currents [e.g., I_{K(Ca)}].

Single BK_{Ca}-channel amplitudes were determined by fitting Gaussian distributions to the amplitude histograms of the closed and open state, respectively. The channel activity in a patch was expressed as NP_o, which is estimated using the following equation:

$$NP_o = \frac{(A_1 + 2A_2 + 3A_3 + \dots + nA_n)}{(A_o + A_1 + A_2 + A_3 + \dots + A_n)} \quad (1)$$

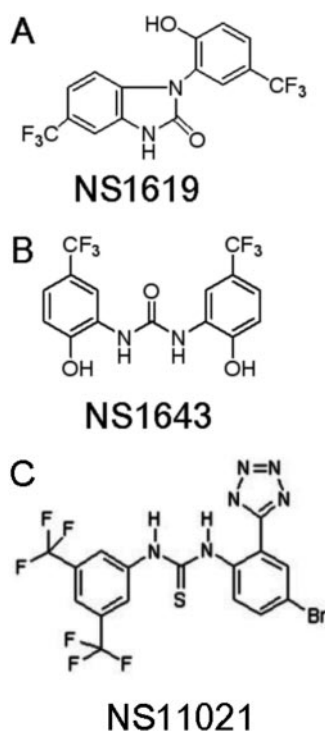


Fig. 1. Chemical structures of NS1619 (A), NS1643 (B), and NS11021 (C).

where N is the number of active channels in the patch, A_0 is the area under the curve of an all-points histogram corresponding to the closed state, and A_1, \dots, A_n represent the histogram areas reflecting the levels of distinct open state for 1 to n channels in the patch. Open- or closed-time distributions were fitted with logarithmically scaled bin width using the method of McManus et al. (1987).

To calculate the percentage stimulation of NS1643 on $I_{K(Ca)}$, the cells were bathed in normal Tyrode's solution, which contained 1.8 mM $CaCl_2$. Each cell was depolarized from 0 to +50 mV at a rate of 0.1 Hz, and the amplitude of $I_{K(Ca)}$ was measured at the end of the depolarizing pulses. The amplitude of $I_{K(Ca)}$ in the presence of 30 μM NS1643 was taken as 100%, and those during exposure to different concentrations (0.3–10 μM) of NS1643 were then compared. The concentration-response relationship for NS1643-induced activation of $I_{K(Ca)}$ in GH_3 cells was determined by the Hill equation using a nonlinear regression analysis, that is:

$$\% \text{ increase} = \frac{E_{\max} \times [C]^n}{EC_{50} + [C]^n} \quad (2)$$

where $[C]$ is the NS1643 concentration, EC_{50} and n_H are the half-maximal concentration of NS1643 and the Hill coefficient, respectively, and E_{\max} is the maximal activation of $I_{K(Ca)}$ induced by this compound.

To determine the effect of NS1643 on the activation curve of BK_{Ca} channels, the ramp pulses from 0 up to +90 mV over a 1-s period were applied to the detached patch. The activation curve was calculated by averaging current traces in response to 20 voltage ramps and dividing each point of the mean current by single-channel amplitude for each potential, after leakage currents were corrected (Carl and Sanders, 1990; Wu et al., 2000). The relationships between the membrane potentials and the relative open probability obtained before and after the application of NS1643 (3 μM) were then fitted with a Boltzmann function of the following form:

$$\text{Relative open probability} = \frac{P_{\max}}{1 + \exp \left[\frac{-(V - V_{1/2})qF}{RT} \right]} \quad (3)$$

where P_{\max} is the maximal open probability of channel openings during exposure to NS1643 (3 μM) at +90 mV, $V_{1/2}$ is the voltage at

which there is half-maximal activation, q is the apparent gating charge, F is Faraday's constant, R is the universal gas constant, and T is the absolute temperature. Curve-fitting to data sets presented here was performed with the aid of Excel 2007 (Microsoft) and Origin 7.5 (OriginLab Corp).

The averaged results are presented as means \pm S.E.M., with n representing the number of cells from which the data were obtained. The paired or unpaired t test and one-way analysis of variance with the least significance difference method for multiple comparisons were used for statistical evaluation of the differences among the mean values. Statistical analyses were performed using SPSS 14.0 (SPSS Inc., Chicago, IL). Differences between values were considered significant when $P < 0.05$.

Drugs and Solutions. 3,7-Dimethyl-1-propargylxanthine, NS1643 ($C_{15}H_{10}F_6N_2O_3$) (Fig. 1), and tetrodotoxin were obtained from Sigma Chemical (St. Louis, MO), and paxilline was from Alomone Labs (Jerusalem, Israel). Azimilide was a generous gift from Procter and Gamble Pharmaceuticals (Cincinnati, OH). The stock solution of NS1643 (50 mM) was made in dimethyl sulfoxide and diluted to final concentration (0.3–30 μM) in the bath solution. All other chemicals were commercially available and of reagent grade. The water used in this study was deionized using a Milli-Q water purification system (Millipore, Taipei, Taiwan).

The composition of normal Tyrode's solution was 136.5 mM NaCl, 5.4 mM KCl, 1.8 mM $CaCl_2$, 0.53 mM $MgCl_2$, 5.5 mM glucose, and 5.5 mM HEPES-NaOH buffer, pH 7.4. To record K^+ currents or membrane potential, a patch pipette was filled with a solution consisting of 140 mM KCl, 1 mM $MgCl_2$, 3 mM Na_2ATP , 0.1 mM Na_2GTP , 0.1 mM EGTA, and 5 mM HEPES-KOH buffer, pH 7.2. For single-channel recordings, high K^+ bathing solution contained 145 mM KCl, 0.53 mM $MgCl_2$, and 5 mM HEPES-KOH, pH 7.4, and pipette solution contained 145 mM KCl, 2 mM $MgCl_2$, and 5 mM HEPES-KOH, pH 7.2.

Results

Effect of NS1643 on $I_{K(Ca)}$ in Pituitary GH_3 Cells. In the initial set of experiments, a whole-cell configuration was used to investigate electrical properties of macroscopic $I_{K(Ca)}$ in these cells. Cells were bathed in normal Tyrode's solution,

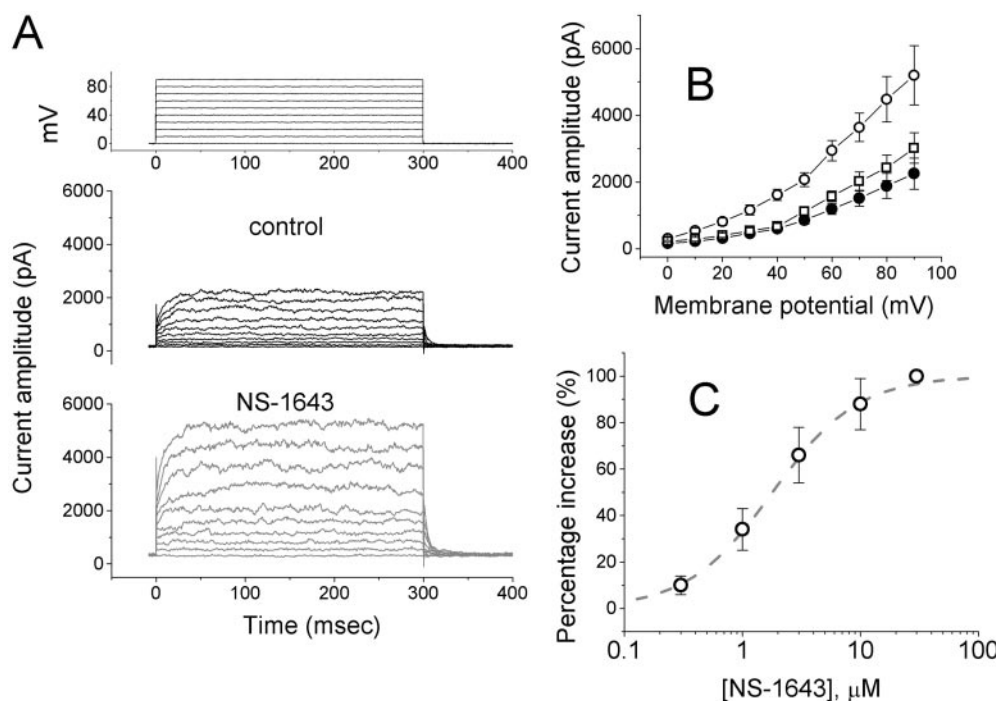


Fig. 2. Stimulatory effect of NS1643 on $I_{K(Ca)}$ in pituitary tumor (GH_3) cells. **A**, superimposed current traces obtained before (top) and during cell exposure (bottom) to 3 μM NS1643. Cells were bathed in normal Tyrode's solution containing 1.8 mM $CaCl_2$. The cell was held at 0 mV, and different voltage steps ranging from 0 to +90 mV in 10-mV increments were applied. The uppermost side in **A** indicates the voltage protocol used. **B**, averaged I-V relationships of $I_{K(Ca)}$ measured at the end of each voltage pulse in control (●), during exposure to 3 μM NS1643 (○), and washout of NS1643 (□). Each point represents the mean \pm S.E.M. ($n = 6-11$). **C**, concentration-response relationship for NS1643-induced stimulation of $I_{K(Ca)}$. The smooth line represents the best fit to eq. 2, as described under *Materials and Methods*. The values for EC_{50} , maximal percentage increase of $I_{K(Ca)}$, and Hill coefficient were calculated to be 1.8 μM , 100%, and 1.2, respectively. Each point represents the mean \pm S.E.M. ($n = 5-9$).

which contained 1.8 mM CaCl₂. When each cell was held at 0 mV and different voltage pulses ranging from 0 to +90 mV with 10-mV increments were applied, a family of large, noisy outward currents with an outward rectification was elicited. Current amplitudes were increased with greater depolarization and reduced by removal of extracellular Ca²⁺ (Wu et al., 1999). However, when the cells were exposed to NS1643 (3 μM), the amplitude of the outward current was greatly increased throughout the entire voltage-clamp step (Fig. 2A). For example, when cells were depolarized from 0 to +80 mV, NS1643 (3 μM) significantly increased I_{K(Ca)} amplitude from 1884 ± 378 to 4483 ± 684 pA (*n* = 7, *P* < 0.05). After washout of the compound, the current amplitude returned to 2431 ± 379 pA (*n* = 5). The averaged I-V relationships for current amplitudes in the absence and presence of NS1643 are illustrated in Fig. 2B. In addition, a further application of paxilline (1 μM) can reverse the increased amplitude of I_{K(Ca)} induced by NS1643 (3 μM); however, azimilide (30 μM), a blocker of I_{K(erg)} (Liu and Wu, 2003), was not found to have any effects on NS1643-induced increase of I_{K(Ca)}.

The relationship between the concentration of NS1643 and the percentage increase of I_{K(Ca)} was constructed (Fig. 1C). The presence of NS1643 was found to increase the amplitude of I_{K(Ca)} in a concentration-dependent manner. The value of half-maximal concentration (i.e., EC₅₀) required for the effect of NS1643 on I_{K(Ca)} was 1.8 μM, and 30 μM NS1643 fully increased the current amplitude. The results reflect that NS1643 can have a stimulatory effect on I_{K(Ca)} in pituitary GH₃ cells.

Stimulatory Effect of NS1643 on the Activity of BK_{Ca} Channels in Pituitary GH₃ Cells. Paxilline, a selective inhibitor of BK_{Ca} channels, could reverse NS1643-stimulated I_{K(Ca)}. The increased macroscopic I_{K(Ca)} could be due to the increased open probability, an increase in the number of active channels, or both. For these reasons, the effects of NS1643 on BK_{Ca}-channel activity in these cells were further investigated. For these experiments, single-channel recordings with an inside-out configuration were performed in symmetrical K⁺ solution (145 mM) (Fig. 3). It is interesting that when NS1643 (3 μM) was applied to the intracellular leaflet of the excised patch, channel activity that was calculated by eq. 1, was significantly increased to 0.665 ± 0.091 (*n* = 6) from a control of 0.0232 ± 0.0075 (*n* = 6, *P* < 0.01). However, no significant modification in single-channel amplitude of these channels could be demonstrated during the exposure to 3 μM NS1643 (Fig. 3C).

Lack of Effect of NS1643 on Single-Channel Conductance of BK_{Ca} Channels. We next examined whether exposure to NS1643 might modify single-channel conductance. To construct the plots of current amplitude as a function of membrane potential, the voltage ramp pulses from +10 to +90 mV with a duration of 1 s were applied at a rate of 0.05 Hz. Figure 4A illustrates an ohmic I-V relationship of BK_{Ca} channels obtained in the absence and presence of 3 μM NS1643. The single-channel conductance in the control was calculated to be 175 ± 12 pS (*n* = 11) with a reversal potential of 0 ± 3 mV (*n* = 9). The value for these channels did not differ significantly from that obtained in the presence of 3 μM NS1643 (177 ± 11 pS; *n* = 10, *P* > 0.05). Thus, application of this compound did not result in any modification in the single-channel conductance of BK_{Ca} channels, although it was able to increase the channel open probability. Thus,

NS1643-induced increase of channel activity can result primarily from an increase in open state probability rather than an increase in the number of active channels.

Effect of NS1643 on the Activation Curve of BK_{Ca} Channels. The voltage-dependence of BK_{Ca} channels was also evaluated in the presence of this compound. In these experiments, the activation curves were obtained by use of voltage-ramp protocol. The ramp pulses were delivered from 0 to +90 mV with a duration of 1 s. Figure 4B shows the activation curve of BK_{Ca} channels with or without application of NS1643 (3 μM). The plots of relative open probability as a function of membrane potential were fitted with eq. 3, as described under *Materials and Methods*. In control, *V*_{1/2} = 48.1 ± 1.9 mV and *q* = 2.6 ± 0.8 *e* (*n* = 6), whereas *V*_{1/2} = 33.7 ± 1.8 mV and *q* = 2.7 ± 0.7 *e* (*n* = 6). Thus, exposure to

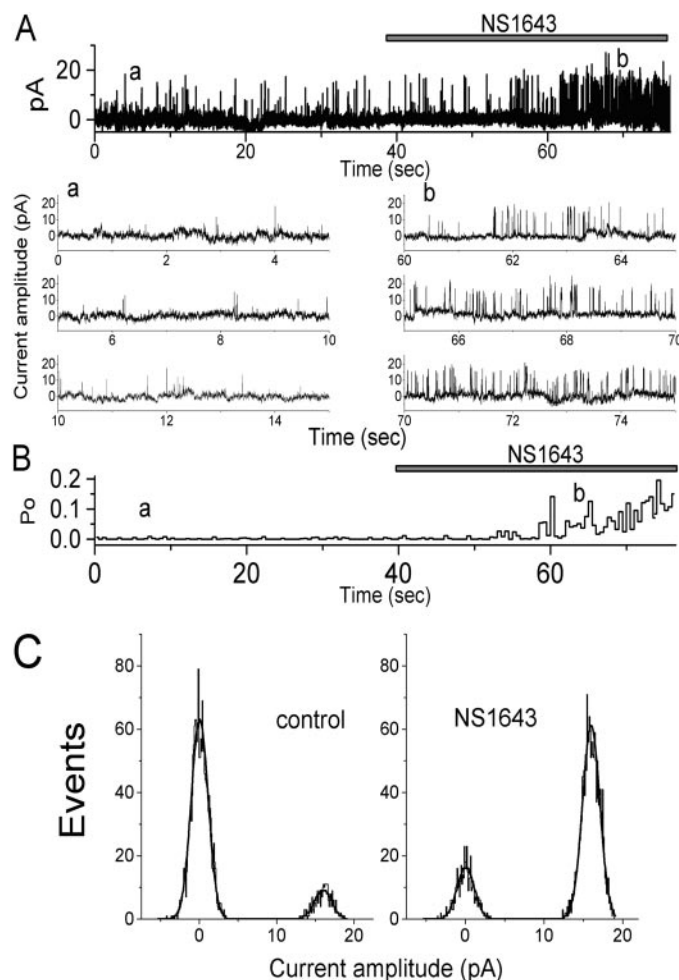


Fig. 3. Stimulatory effect of NS1643 on the activity of BK_{Ca} channels recorded from pituitary GH₃ cells. The potential was held at +60 mV. A, original current traces recorded from a detached patch of GH₃ cells. The horizontal bar shown above indicates bath application of NS1643 (3 μM). The bottom of A shows the current traces displayed at an expanded time scale. Original current traces (a and b) shown at the top correspond to those labeled a and b in the bottom. An upward deflection of the current record indicates the opening events of the channel. B, time course of changes in channel open probability from A. It is noteworthy that there was a progressive increase in channel open probability when the detached patch was exposed to NS1643 (3 μM). C, amplitude histograms measured in the control (left) and in the presence of 3 μM NS1643 (right). All points shown in these histograms were fitted with simple Gaussian functions. The closed state corresponds to the peak at 0 pA. Note that no discernible change in single-channel amplitude can be demonstrated in the presence of NS1643.

NS1643 caused an approximately 15-mV leftward shift in voltage-dependent activation of BK_{Ca} channels, despite its ability to increase the probability of channel openings. However, there was no significant change in the gating charge (i.e., q) of BK_{Ca} channels in pituitary GH₃ cells. The results indicate that in addition to the increased open probability, this compound applied to the intracellular leaflet of the excised patch can modify the voltage dependence of these channels.

Effect of Internal Ca²⁺ Concentration on NS1643-Stimulated Activity of BK_{Ca} Channels. We further investigated whether NS1643 can alter Ca²⁺-dependence of BK_{Ca} channels in GH₃ cells. In this set of experiments, when a detached patch was formed, different concentrations (i.e., 0.01, 0.1, and 10 μ M) of Ca²⁺ with or without application of NS1643 (3 μ M) were present in the bath. As shown in Fig. 4C, at a given concentration of NS1643 (3 μ M), the magnitude of NS1643-induced increase in channel activity was increased as internal Ca²⁺ was elevated. In addition, NS1643 enhanced channel activity to a greater extent when internal Ca²⁺ was increased. Therefore, the results suggest that the magnitude of NS1643-stimulated channel activity seems to depend on the level of internal Ca²⁺, although its stimulatory action on BK_{Ca} channels may not require internal Ca²⁺.

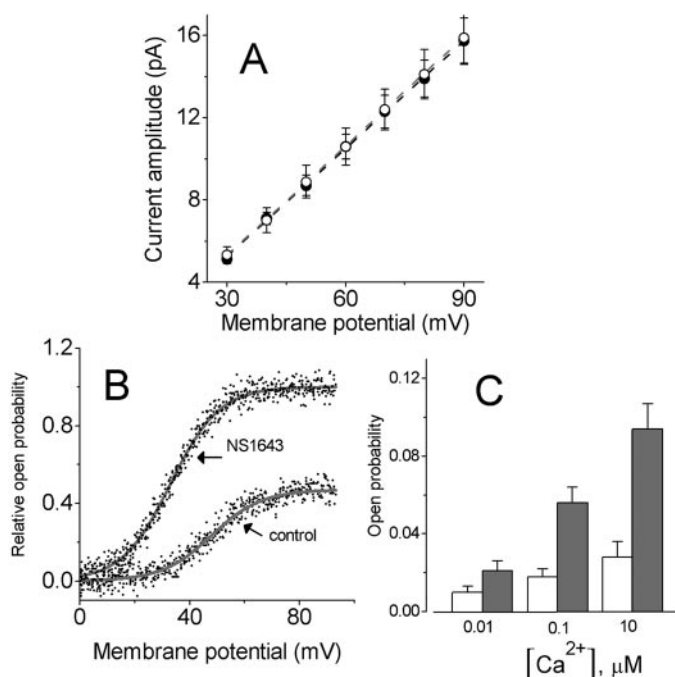


Fig. 4. Voltage- and Ca²⁺-dependent effect of NS1643 on the activity of BK_{Ca} channels in GH₃ cells. The inside-out recordings were conducted with a symmetrical K⁺ solution (145 mM). A, lack of effect of NS1643 on single-channel conductance of BK_{Ca} channels. The broken lines represent the I-V relationships of BK_{Ca} channels obtained in the absence (●) and presence (○) of 3 μ M NS1643. Each point represents the mean \pm S.E.M. ($n = 9-12$). B, effect of NS1643 on the activation curve of BK_{Ca} channels. The activation curves were obtained when the ramp pulses were applied from 0 to +90 mV with a duration of 1 s. The smooth curves obtained in the absence and presence of 3 μ M NS1643 represent the best fit to eq. 3, as described under *Materials and Methods*. C, the effect of internal Ca²⁺ concentration on NS1643-stimulated activity of BK_{Ca} channels. The potential was held at +60 mV, and different concentrations (0.1, 1.0, and 10 μ M) of Ca²⁺ were present in the bath. Open bars are control and filled bars were obtained in the presence of 3 μ M NS1643. Each point represents the mean \pm S.E.M. ($n = 4-7$).

Effect of NS1643 on Kinetic Behavior of BK_{Ca} Channels in Pituitary GH₃ Cells. Because NS1643 was found to enhance channel activity with no significant changes in single-channel conductance, we evaluated whether it could modify the gating of these channels. The effects of NS1643 on mean open and closed time of BK_{Ca} channels in these cells were examined and analyzed during recordings from the patches in which only one active channel was found. As shown in Fig. 5, in a detached patch under control conditions, the closed-time distributions obtained at the level of +60 mV were fitted with a two-exponential function. The time constants for fast and slow components of mean closed time were 8 ± 3 and 37 ± 7 ms, respectively ($n = 7$). NS1643 at a concentration of 3 μ M added to the bath significantly decreased the mean lifetime of the closed state to 4 ± 2 and 27 ± 5 ms, respectively ($n = 7$, $P < 0.05$). On the other hand, no significant change in mean lifetime of opening events was observed during exposure to 3 μ M NS1643 (1.87 ± 0.06 versus 1.89 ± 0.05 ms; $n = 7$, $P > 0.05$). These data suggest that the stimulation by this compound of BK_{Ca} channels in these cells is largely attributed to an increase in channel open probability caused by the decreased closed time. Therefore, the binding of this compound to the membrane in GH₃

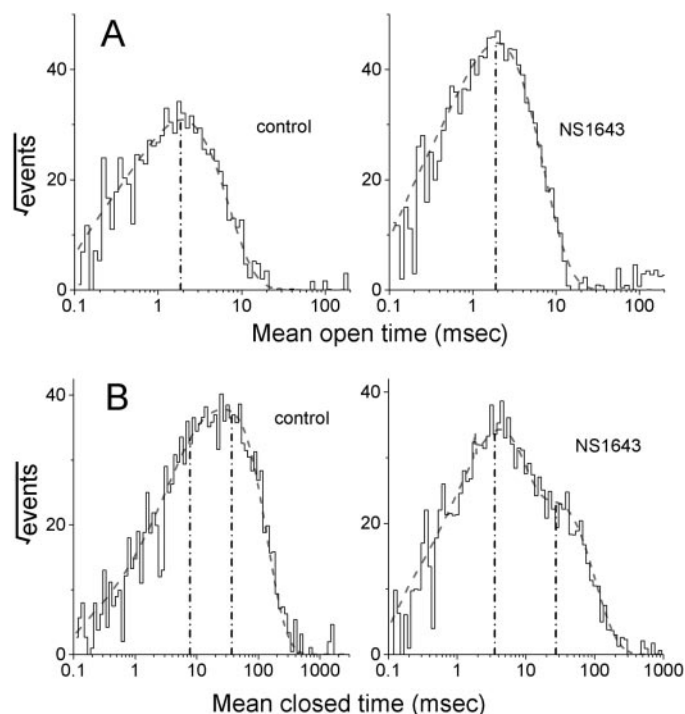


Fig. 5. Effect of NS1643 on mean open and closed time of BK_{Ca} channels in GH₃ cells. Inside-out configuration was performed in these experiments, and the potential was held at +60 mV. Cells were bathed in symmetrical K⁺ solution (145 mM), and the bath medium contained 0.1 μ M Ca²⁺. The open- and closed-time histograms obtained in the control (left) and during exposure (right) to 3 μ M NS1643 are illustrated in the top (A) and bottom (B), respectively. Control data were obtained from measuring 266 channel openings with a total recording time of 1 min, whereas those obtained in the presence of NS1643 (3 μ M) were measured from 561 channel openings with a total recording time of 30 s. The vertical broken lines shown in each lifetime distribution are placed at the value of time constant in the open or closed state of the channel. It is noteworthy that dwell-time data were plotted with a logarithmic time axis along the abscissa and a square-root ordinate, which represents the number of events in each bin. The broken smooth curves were well fitted by a one- or two-exponential function.

cells tends to cause the BK_{Ca} channel to spend less time in the closed state.

Effect of NS1643 on I_{K(erg)} in Pituitary GH₃ Cells. Previous studies have demonstrated that NS1643 is able to activate HERG channels in *X. laevis* oocytes and in HEK293 cells (Casis et al., 2006; Diness et al., 2006; Hansen et al., 2006). One would assume that the observed amplitude of I_{K(Ca)} stimulated by NS1643 could be associated with its activation of I_{K(erg)} present in GH₃ cells. We further explored whether this compound might have any effect on I_{K(erg)} (Wu et al., 2000; Liu and Wu, 2003). For these experiments, cells were bathed in a high-K⁺, Ca²⁺-free solution. A family of large inward deactivating currents in response to long-lasting membrane hyperpolarizations could be seen in these cells. These tail currents elicited by membrane hyperpolarizations were sensitive to inhibition by azimilide (30 μM) or risperidone (30 μM), and correspond to those reported previously as I_{K(erg)} (Wu et al., 2000; Liu and Wu, 2003). As shown in Fig. 6, NS1643 at a concentration of 3 μM had no effect on the peak amplitude of deactivating I_{K(erg)} seen in GH₃ cells. As the time course for deactivating I_{K(erg)} became slower, the current amplitude measured at the end of membrane hyperpolarization was significantly increased. However, a further application of paxilline (1 μM) could reverse the NS1643-induced increase in the time constant of deactivating I_{K(erg)} (Fig. 6). The results showed that NS1643 had little or no effect on I_{K(erg)} present in pituitary GH₃ cells.

Effect of NS1643 on the Firing of Spontaneous APs in GH₃ Cells. In the following experiments, we investigated the effect of NS1643 on repetitive firing of APs in these cells. Cells were bathed in normal Tyrode's solution containing 1.8 mM CaCl₂, and current-clamp recordings were made. As shown in Fig. 7, when cells were exposed to NS1643, the resting potential was hyperpolarized, and the firing of APs

was progressively reduced. For example, NS1643 (10 μM) significantly decreased firing frequency from 0.45 ± 0.04 to 0.14 ± 0.02 Hz (*n* = 6, *P* < 0.05). A further application of paxilline (1 μM) returned the frequency to 0.41 ± 0.03 Hz (*n* = 5). Therefore, these results clearly showed that NS1643 was effective in altering the firing of APs in GH₃ cells. The inhibitory action of NS1643 on the firing of APs can be explained primarily by its activation of BK_{Ca} channels. Therefore, the decrease in the firing of APs caused by this compound may attenuate the stimulus-secretion coupling in these cells.

Stimulatory Effect of NS1643 on the α-hSlo Channel Expressed in HEK293T Cells. In a final set of experiments, we tested the hypothesis that NS1643 had effects on the activity of BK_{Ca} channels in HEK293T cells transfected with α-hSlo. Under our experimental conditions, the transfection of α-hSlo in HEK293T cells could result in the appearance of BK_{Ca} channels. The functional properties of BK_{Ca} channels obtained after transfection of α-hSlo into HEK293T cells were found to correspond to those measured from pituitary GH₃ cells. A single-channel current through α-hSlo was identified by adding paxilline (1 μM) to bath solution. In addition, in inside-out configuration, when NS1643 was applied to the intracellular side of excised patch, the activity of BK_{Ca} channels in α-hSlo-expressing HEK293T cells was dramatically enhanced (Fig. 8). The time constants for fast and slow components of mean closed time were significantly reduced to 5 ± 1 and 22 ± 4 ms from a control value of 14 ± 4 and 39 ± 7 ms, respectively (*n* = 7, *P* < 0.05). However, the mean open time between the absence and presence of NS1643 did not differ significantly (2.33 ± 0.07 versus 2.36 ± 0.08 ms; *n* = 7, *P* > 0.05). No modification in single-channel conductance could be detected in the presence of 3 μM NS1643 (158 ± 12 versus 159 ± 11 pS; *n* = 7, *P* >

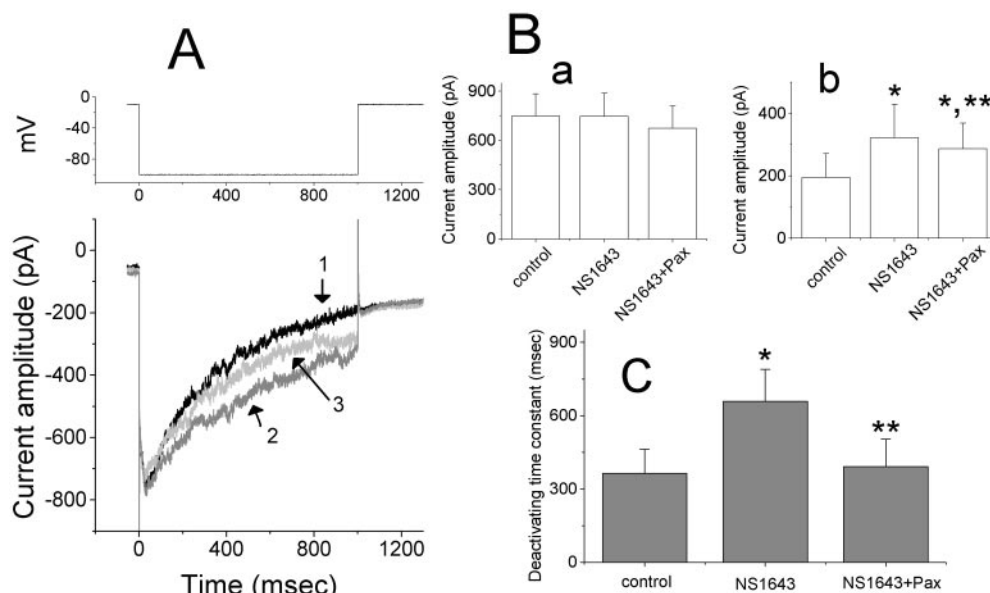


Fig. 6. Effect of NS1643 on I_{K(erg)} in GH₃ cells. Cells were bathed in a high K⁺, Ca²⁺-free solution containing tetrodotoxin (1 μM) and CdCl₂ (0.5 mM). A, current traces obtained when the cell was held at -10 mV and hyperpolarizing pulses to -100 mV with a duration of 1 s were applied. 1, control; 2, NS1643 (3 μM); 3, NS1643 plus paxilline (1 μM). In the experiments of NS1643 plus paxilline, paxilline was applied in the continued presence of NS1643. The top of A indicates the voltage protocol used. B, bar graphs showing the effects of NS1643 (3 μM) and NS1643 plus paxilline (1 μM) on current amplitude measured at the beginning (a) and end (b) of the hyperpolarizing pulses (mean ± S.E.M.; *n* = 5–8 for each bar). Pax, paxilline (1 μM). *, significantly different from control. **, significantly different from the NS1643 (3 μM) alone group. C, summary of data depicting the effects of NS1643 and NS1643 plus paxilline on the time constant of I_{K(erg)} deactivation in GH₃ cells (mean ± S.E.M.; *n* = 5–8 for each bar). *, significantly different from control. **, significantly different from the NS1643 (3 μM) alone group.

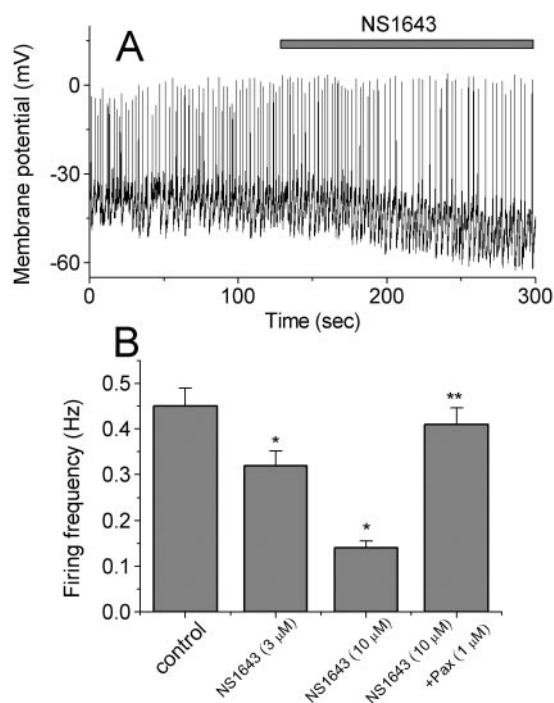


Fig. 7. Effect of NS1643 on the firing of APs in GH₃ cells. Cells were bathed in normal Tyrode's solution. Patch pipettes were filled with a K⁺-containing solution. Changes in membrane potential were measured under current-clamp configuration. A, continuous potential trace obtained before and after application of NS1643. The horizontal bar shown above indicates the application of NS1643 (3 μM) to the bath. B, summary of data showing inhibitory effect of NS1643 on the firing frequency of APs. Pax, paxilline (1 μM). *, significantly different from control (i.e., in the absence of NS1643). **, significantly different from NS1643 (10 μM) alone group. Each point represents the mean ± S.E.M. (*n* = 5–7).

0.05). A further application of paxilline (1 μM) reversed the NS1643-induced increase in channel open probability. The results showed that, similar to the results obtained in pituitary GH₃ cells, NS1643 can increase the probability of channel openings in HEK293T cells expressing α -hSlo.

Discussion

The major findings of this study are as follows. First, in differentiated GH₃ cells, NS1643, an activator of I_{K(Ca)}, was effective in increasing the amplitude of I_{K(Ca)}. Second, NS1643 enhanced the activity of BK_{Ca} channels from the cytoplasmic side in inside-out patch configuration, with no modification in single-channel conductance. The increased channel activity was accompanied by a shift of the steady-state activation toward a less depolarized range. Third, this compound had minimal or no effect on the open time of the channel, but reduced the mean closed time, thereby leading to an increase in channel open probability. Fourth, NS1643 decreased the repetitive firing of APs in GH₃ cells. Fifth, NS1643 enhanced the activity of BK_{Ca} channels expressed in HEK293T cells transfected with α -hSlo. The stimulatory effect of NS1643 on BK_{Ca} channels could be an important mechanism underlying NS1643-induced action in endocrine or neuroendocrine cells.

Our studies demonstrated that NS1643 applied to the cytoplasmic side of excised patch had no effect on single-channel conductance of BK_{Ca} channels, although it increased the probability of channel openings significantly. The amplitude of macroscopic I_{K(Ca)} enhanced by NS1643 was believed to be due to an increase in channel open probability accompanied by decreased mean closed time. Because it did not affect mean open time of the channel, unlike NS1608 or NS11021

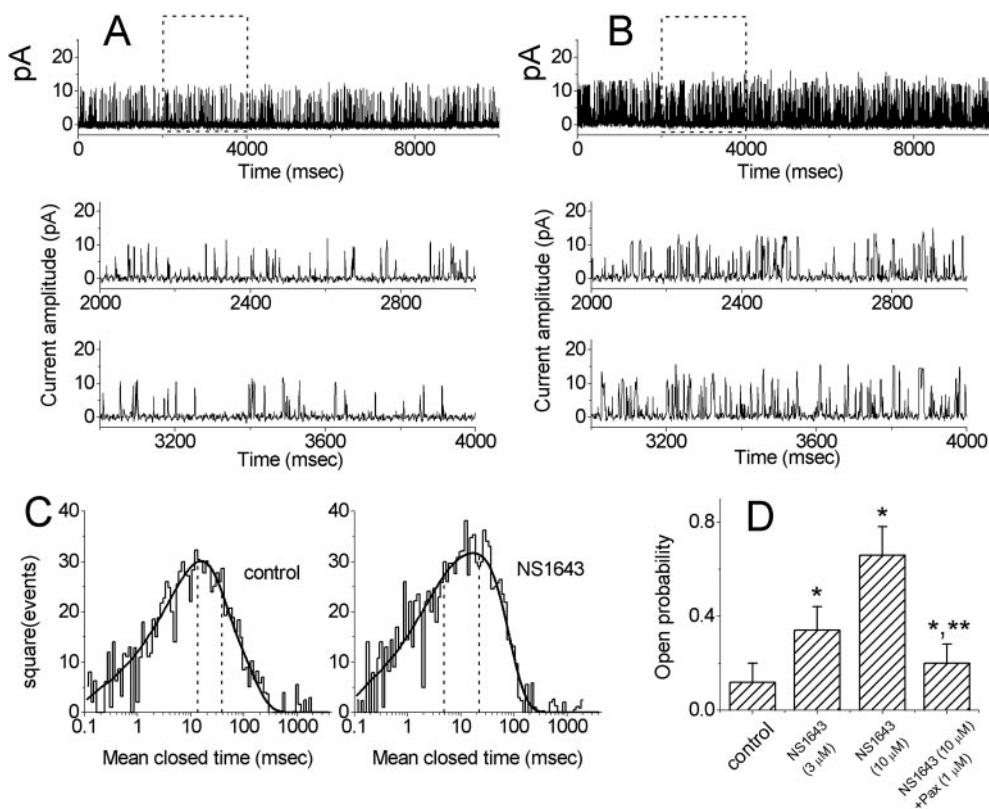


Fig. 8. Stimulatory effect of NS1643 on BK_{Ca}-channel activity recorded from α -hSlo-expressing HEK293T cells. Original current traces showing the activity of BK_{Ca} channels before (A) and after the addition (B) of 3 μM NS1643. Inside-out recordings were conducted with symmetrical K⁺ concentration (145 mM). The potential was held at +60 mV, and the bath medium contained 0.1 μM Ca²⁺. The bottom traces in A and B show the expanded records as indicated by the dashed box in the uppermost traces. C, closed-time histograms obtained in the control (left) and during exposure (right) to 3 μM NS1643. The vertical dashed lines indicate the value of the time constant in the closed state of the channel. The smooth curves were fitted by a two-exponential function. D, summary of data showing stimulatory effect of this compound on BK_{Ca}-channel activity present in α -hSlo-expressing HEK293T cells (mean ± S.E.M.; *n* = 7–9 for each bar). Pax, paxilline (1 μM). *, significantly different from control. **, significantly different from NS1643 (10 μM) alone group.

(Strøbaek et al., 1996; Bentzen et al., 2007), NS1643 might increase channel open probability mainly by its ability to bind the channel in closed conformation. It is also reasonable to assume that this compound may decrease the energy barrier for channel openings because of a destabilization of the closed state.

The inability of NS1643 to modify single-channel conductance observed in this study indicates that the increased responsiveness of the channel to this compound is unlikely to be located at the central ion-conducting pore of the channel. The lack of any change in the slope factor of the activation curve of BK_{Ca} channels during exposure to this compound also prompted us to propose that the stimulatory effect of NS1643 on the BK_{Ca} channel is not mediated by a direct effect on the voltage sensor per se, and that its binding site may lie outside of the transmembrane field. NS1643 stimulated the activity of BK_{Ca} channels to a greater magnitude when intracellular Ca²⁺ was elevated, although in the absence of intracellular Ca²⁺, it was able to activate channel activity. The results suggest that its activation could be dependent on the level of intracellular Ca²⁺. The decreased closed time caused by NS1643 is likely to be associated with enhanced Ca²⁺ sensitivity of the channel. It remains to be determined whether this compound simply enhances the sensitivity of the channel to cytoplasmic Ca²⁺, or instead it destabilizes the closed state by a direct effect on channel gating.

Previous studies showed that increased availability of intracellular Ca²⁺ resulting from the increase of Ca²⁺ influx through L-type Ca²⁺ channels is able to increase the amplitude of I_{K(Ca)} in endocrine cells (Wu et al., 2003; Marcantoni et al., 2007; Tsaneva-Atanasova et al., 2007). However, the inability of NS1643 to increase L-type Ca²⁺ current in GH₃ cells (Supplementary Fig. 1) and as described previously in cardiac myocytes (Hansen et al., 2006) may exclude this possibility. No detectable change in intracellular Ca²⁺ in GH₃ cells was observed during the exposure to NS1643 (data not shown), and the results showing that NS1643 activated channel activity in HEK293T cells expressing α -hSlo strengthen this notion. In addition, the inability of 3,7-dimethyl-1-propargylxanthine, a blocker of adenosine A₂ receptors, to reverse the NS1643-induced increase of I_{K(Ca)} in GH₃ cells was found in our study (data not shown). Therefore, its stimulatory action on I_{K(Ca)} seen in these cells is unlikely to be mediated by the binding to adenosine receptors (Giorgi et al., 2008).

The concentration-dependent increase in the amplitude of I_{K(Ca)} with an EC₅₀ value of 1.8 μ M was observed in this study. NS1643 at a concentration of 3 μ M was found to have little or no effect on the peak amplitude of deactivating I_{K(erg)} in GH₃ cells, although the deactivating time course seemed to be slower in the presence of NS1643. Therefore, the experiments described in this study imply that even though NS1643 has been used to study the HERG channel function (Mewe et al., 2008), this compound at lower concentrations is also able to activate BK_{Ca} channels directly. Because of its high potency, the data presented herein may be important in interpreting the in vivo mechanism of actions of this compound.

The reason why NS1643 has no effect on I_{K(erg)} in GH₃ cells is unclear. These results may be explained as follows. First, the mechanism of stimulatory action of this compound is

primarily due to altered inactivation of I_{K(erg)} (Casis et al., 2006; Hansen et al., 2006; Xu et al., 2008). In GH₃ cells, I_{K(erg)} elicited by membrane depolarization is rather difficult to be detected, because it consistently overlaps with other types of outward K⁺ currents over a range of depolarizing voltages (Wu et al., 2000). Second, this cell line was reported to contain many different isoforms of endogenous *erg* channels (Schledermann et al., 2001), because the *erg1* channel is more sensitive to stimulation by NS1643 (Casis et al., 2006; Diness et al., 2006; Hansen et al., 2006).

Activation of BK_{Ca} channels induced by NS1643 in GH₃ cells shares similar characteristics in HEK293, in which α -hSlo channels are functionally expressed. These results are of importance because they suggest that NS1643 may bind to a site located in the cytoplasmic side of the α -subunit. It is thus tempting to speculate that in addition to the HERG channel, the BK_{Ca} channel α -subunit may be an important target for the action of this compound. However, it still remains to be further investigated to what extent NS1643 affects other variants of BK_{Ca} channels in different types of cells. In addition, niflumic acid, an activator of BK_{Ca} channels, was shown to activate *erg* K⁺ currents (Ottolia and Toro, 1994; Wu et al., 2001; Fernandez et al., 2008). Therefore, these two types of ion channels seem to share unique motifs with which some small compounds can interact.

The present findings are similar to those reported with its parent compound, NS1619 (Gribkoff et al., 1996), and the newer one, NS11021 (Bentzen et al., 2007). NS11021 is even more potent to activate BK_{Ca} channels than NS1643 (Bentzen et al., 2007). Therefore, results from this study showed another diphenylurea that presents neither clear advantage nor distinction over other tens of activators that act similarly on BK_{Ca} channels (Nardi and Olesen, 2008). However, our study also demonstrated that NS1643 could hyperpolarize the membrane and reduce the firing of APs in clonal pituitary GH₃ cells. Although the detailed mechanism of stimulatory actions of NS1643 has not yet been unraveled, our results provide the first evidence showing that this compound is able to interact with the BK_{Ca} channel to increase the amplitude of I_{K(Ca)}. Assuming that similar results observed in this study are found in neuroendocrine or endocrine cells in vivo, the increase in K⁺ efflux through NS1643-induced stimulation of BK_{Ca} channels may underlie the mechanisms through which this compound influences cellular function.

Acknowledgments

We are grateful to Paul Steed for reading and editing the manuscript. We appreciate the support for this work from Professor Ruey J. Sung at the Cardiac Electrophysiology and Systems Biology Center, National Cheng Kung University Medical Center, Tainan, Taiwan.

References

- Bentzen BH, Nardi A, Calloe K, Madsen LS, Olesen SP, and Grunnet M (2007) The small molecular NS11021 is a potent and specific activator of Ca²⁺-activated big-conductance K⁺ channels. *Mol Pharmacol* **72**:1033–1044.
- Calderone V (2002) Large-conductance, Ca²⁺-activated K⁺ channels: function, pharmacology and drugs. *Curr Med Chem* **9**:1385–1395.
- Carl A and Sanders KM (1990) Measurement of single channel open probability with voltage ramps. *J Neurosci Methods* **33**:157–163.
- Casis O, Olesen SP, and Sanguinetti MC (2006) Mechanism of action of a novel human *ether-a-go-go*-related gene channel activator. *Mol Pharmacol* **69**:658–665.
- Diness TG, Hansen RS, Olesen SP, and Grunnet M (2006) Frequency-dependent modulation of KCNQ1 and HERG1 potassium channels. *Biochem Biophys Res Commun* **343**:1224–1233.
- Fernandez D, Sargent J, Sachse FB, and Sanguinetti MC (2008) Structural basis for

- ether-a-go-go-related gene K^+ channel subtype-dependent activation by niflumic acid. *Mol Pharmacol* **73**:1159–1167.
- Ghatta S, Nimmagadda D, Xu X, and O'Rourke ST (2006) Large-conductance, calcium-activated potassium channels: structural and functional implications. *Pharmacol Ther* **110**:103–116.
- Giorgi I, Biagi G, Bianucci AM, Borghini A, Livi O, Leonardi M, Pietra D, Calderone V, and Martelli A (2008) N^6 -1,3-Diphenylurea derivatives of 2-phenyl-9-benzyladenines and 8-azaadenines: synthesis and biological evaluation as allosteric modulators of A_{2A} adenosine receptors. *Eur J Med Chem* **43**:1639–1647.
- Gribkoff VK, Lum-Ragan JT, Boissard CG, Post-Munson DJ, Meanwell NA, Starrett JE Jr, Kozlowski ES, Romine JL, Trojnecki JT, McKay MC, et al. (1996) Effects of channel modulators on cloned large-conductance calcium-activated potassium channels. *Mol Pharmacol* **50**:206–217.
- Hansen RS, Diness TG, Christ T, Demnitz J, Ravens U, Olesen SP, and Grunnet M (2006) Activation of human ether-a-go-go-related gene potassium channels by the diphenylurea 1,3-bis-(2-hydroxy-5-trifluoromethyl-phenyl)-urea (NS1643). *Mol Pharmacol* **69**:266–277.
- Holland M, Langton PD, Standen NB, and Boyle JP (1996) Effects of the BK_{Ca} channel activator, NS1619, on rat cerebral artery smooth muscle. *Br J Pharmacol* **117**:119–129.
- Liu YC and Wu SN (2003) Block of *erg* current by linoleoylamide, a sleep-inducing agent, in pituitary GH_3 cells. *Eur J Pharmacol* **458**:37–47.
- Lu HR, Vlamincx E, Hermans AN, Rohrbacher J, Van Ammel K, Towart R, Pugsley M, and Gallacher DJ (2008) Predicting drug-induced changes in QT interval and arrhythmias: QT-shortening drugs point to gaps in the ICHS7B guidelines. *Br J Pharmacol* **154**:1427–1438.
- Marcantoni A, Baldelli P, Hernandez-Guijo JM, Comunanza V, Carabelli V, and Carbone E (2007) L-type calcium channels in adrenal chromaffin cells: role in pace-making and secretion. *Cell Calcium* **42**:397–408.
- McManus OB, Blatz AL, and Magleby KL (1987) Sampling, log binning, fitting, and plotting durations of open and shut intervals from single channels and the effect of noise. *Pflugers Arch* **410**:530–553.
- Mewe M, Wulfsen I, Schuster AM, Middendorff R, Glassmeier G, Schwarz JR, and Bauer CK (2008) *Erg* K^+ channels modulate contractile activity in the bovine epididymal duct. *Am J Physiol Regul Integr Comp Physiol* **294**:R895–R904.
- Nardi A and Olesen SP (2008) BK channel modulators: a comprehensive overview. *Curr Med Chem* **15**:1126–1146.

- Ottolia M and Toro L (1994) Potentiation of large-conductance K_{Ca} channels by niflumic, flufenamic and mefenamic acids. *Biophys J* **67**:2272–2279.
- Schledermann W, Wulfsen I, Schwarz JR, and Bauer CK (2001) Modulation of rat *erg1*, *erg2*, *erg3* and *HERG* K^+ currents by thyrotropin-releasing hormone in anterior pituitary cells via the native signal cascade. *J Physiol* **532**:143–163.
- Strøbaek D, Christophersen P, Holm NR, Moldt P, Ahring PK, Johansen TE, and Olesen SP (1996) Modulation of the Ca^{2+} -dependent K^+ channel, *hslslo*, by the substituted diphenylurea NS1608, paxilline and internal Ca^{2+} . *Neuropharmacology* **35**:903–914.
- Tsaneva-Atanasova K, Sherman A, van Goor F, and Stojilkovic SS (2007) Mechanism of spontaneous and receptor-controlled electrical activity in pituitary somatotrophs: experiments and theory. *J Neurophysiol* **98**:131–144.
- Wu SN, Chiang HT, Shen AY, and Lo YK (2003) Differential effects of quercetin, a natural polyphenolic flavonoid, on L-type calcium current in pituitary tumor (GH_3) cells and neuronal NG108–15 cells. *J Cell Physiol* **195**:298–308.
- Wu SN, Jan CR, and Chiang HT (2001) Fenamates stimulate BK_{Ca} channel activity in the human osteoblast-like MG-63 cells. *J Invest Med* **49**:522–533.
- Wu SN, Jan CR, Li HF, and Chiang HT (2000) Characterization of inhibition by risperidone of the inwardly rectifying K^+ current in pituitary GH_3 cells. *Neuro-psychopharmacology* **23**:676–689.
- Wu SN, Li HF, and Chiang HT (2000) Stimulatory effects of δ -hexachlorocyclohexane on Ca^{2+} -activated K^+ currents in GH_3 lactotrophs. *Mol Pharmacol* **57**:865–874.
- Wu SN, Li HF, Jan CR, and Shen AY (1999) Inhibition of Ca^{2+} -activated K^+ current by clotrimazole in rat anterior pituitary GH_3 cells. *Neuropharmacology* **38**:979–989.
- Wu SN, Wu AZ, and Lin MW (2006) Pharmacological roles of the large-conductance calcium-activated potassium channel. *Curr Top Med Chem* **6**:1025–1030.
- Xu X, Recanatini M, Roberti M, and Tseng GN (2008) Probing the binding sites and mechanisms of action of two human ether-a-go-go-related gene channel activators, 1,3-bis-(2-hydroxy-5-trifluoromethyl-phenyl)-urea (NS1643) and 2-[2-(3,4-dichloro-phenyl)-2,3-dihydro-1H-isindol-5-ylamino]-nicotinic acid (PD307243). *Mol Pharmacol* **73**:1709–1721.

Address correspondence to: Dr. Sheng-Nan Wu, Department of Physiology, National Cheng Kung University Medical College, 1, University Road, Tainan 70101, Taiwan. E-mail: snwu@mail.ncku.edu.tw